

A close-up photograph of a green fabric, likely a piece of clothing, featuring a zipper. The fabric has a fine, woven texture. The zipper is visible at the top and bottom edges, with the teeth and stitching clearly defined. In the center, the word "Paladin" is printed in a white, stylized, rounded font. The letter 'P' is particularly large and features a small green circle at its top. The background behind the fabric is out of focus, showing a light-colored, possibly white, surface.

Paladin

Product  
Catalog

Paladin



**Only uncompromising  
solutions guarantee  
high yields.**

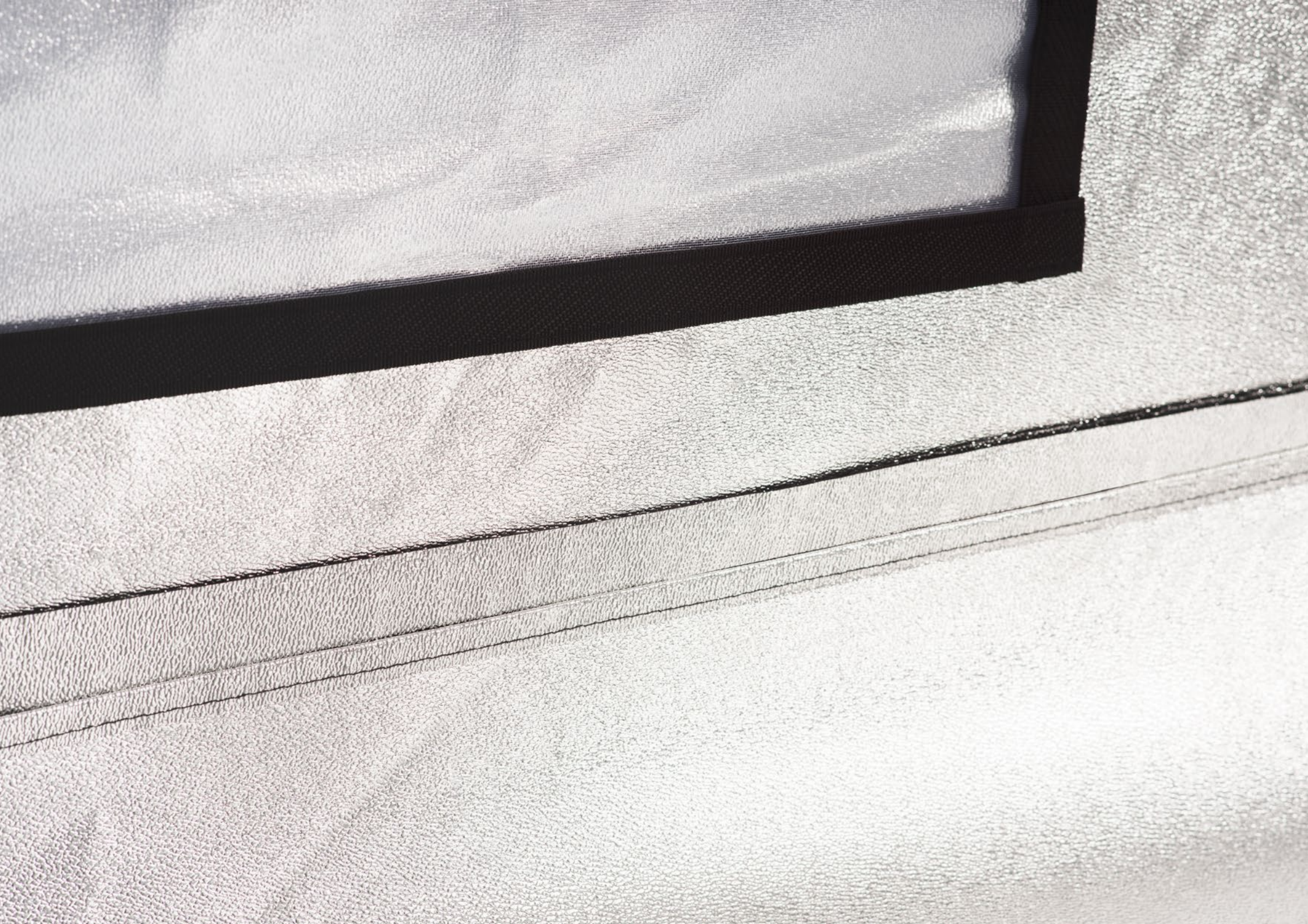


# Our vision

The Paladin brand is a reflection of our broad experience in horticulture. From the very beginning we've been looking for practical solutions that facilitate crop cultivation under artificial lighting. We've had the opportunity to test many growboxes available on the market. We quickly realised that in order to meet the expectations of the most demanding growers we will have to design our proprietary product from scratch. Our goal was to create growboxes, which will become a symbol of quality and functionality. As a result of our efforts the whole range of Paladin products came into existence.

What sets our growboxes apart is an exceptional emphasis on the strength of the materials we use. Robust, steel framework, thick, PVC coated polyester sheathing, or the sort of zippers we used - all this ensures that Paladin growbox will remain dependable for many years to come.

We have always wanted to make the cultivation in the comfort of your own apartment easy and pleasant. That's why Paladin products come equipped with a number of functional elements that will surely be appreciated by every experienced grower. Ease of assembly, thoughtful arrangement of the vents, additional side doors, or ceiling with a load capacity of at least 50kg - we took care of every detail, so that you can focus on the development of your plants. We hope that with the help of Paladin products your yields will prove to be bigger and better than ever!





# Functionality

At a very early stage of the project we took a closer look at all the requirements that a proper growbox has to fulfil.

The end result is an advanced and thorough design of all the Paladin products.



# 100% lightproof

The sheathing of Paladin growboxes is made out of exceptionally thick and durable fabric, which is made of 600D polyester yarn and then covered with a layer of PVC. In practice, this means that our growboxes are 100% lightproof – when they're closed – absolutely no light is visible on the outside. Additionally, the whole cover is very resistant to external factors such as mechanical damage, temperature fluctuations and high humidity.

## Specially modified zippers

The perfect darkness is achieved also thanks to our special zippers. Their unique design prevents any light coming through, even without the use of additional covers or Velcro straps. Opening and closing the door with one hand is not a problem, which significantly improves the usability of the whole tent.





## Robust framework

The supporting structure of Paladin growboxes is a reinforced full metal frame, which ensures adequate stiffness and load capacity. Elements of the frame are made of powder coated galvanized steel pipes with a diameter of 16-22mm and wall thickness of 0,8-1mm, which guarantees durability and low weight. We chose to use steel corner connectors equipped with plastic covers and metal snaps in order to make the whole framework extremely durable and easy to put together.

## Functional ceiling

The steel frame is supplemented by additional ceiling crossbars and four adjustable polyester straps. This way it's possible to stably suspend all the lighting and the whole ventilation system from the ceiling of the growbox. Depending on the model, the maximum load is 50-200kg. This means that the entire cultivation area remains at your disposal.

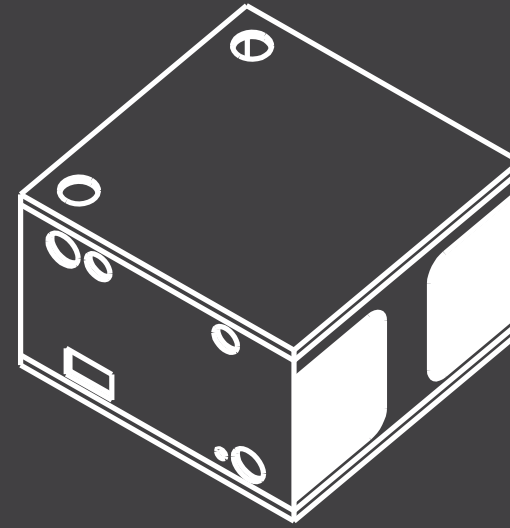
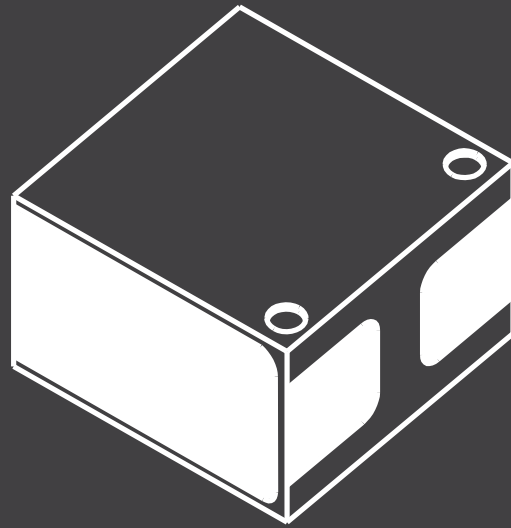






# Ventilation under control

No matter how you want to arrange a ventilation system for your grow area, with a Paladin growbox it will be an easy task. Each of our products is provided with at least four vents. They are both at the bottom and the top and growbox. Each of them has two flanges, both of which have an adjustable diameter in the range of 0-250mm. As a result, the vents remain lightproof and compatible with most available ventilation ducts. Unused holes can be easily sealed or used as passive air intake. Our solution eliminates all these problems and enables multiple ventilation setups. Moreover, it allows you to control the direction of airflow inside the growtent.



## Easy access

Paladin growboxes provide full access to their interior - larger versions of our products come equipped with additional zippers on the side walls. They provide you unrestricted approach to all the equipment and plants. This seemingly insignificant addition makes tending to your crops even more enjoyable.

A roll of white mesh material is shown on a silver roller. The mesh is partially unrolled, revealing its fine texture. The background is a solid green color. The text 'Pest management' is overlaid on the mesh in a green font.

# Pest management

Quite often, fresh air inlets are also the source of unwanted insects. With our growboxes this is not a problem - in each of our products we've placed a dedicated passive inlet protected by an ultra fine mesh material. It eliminates pests effectively and yet does not block the airflow. The inlet can be fully sealed with a Velcro flap.

# Technology

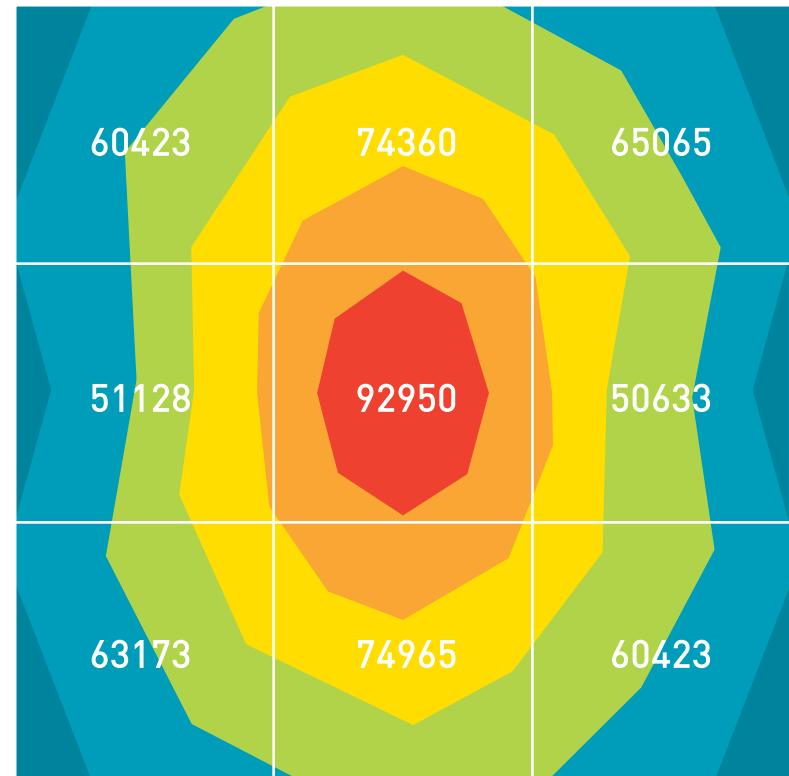
Thanks to the latest generation of BoPET foil, your plants will receive a maximum amount of the vital light radiation.

Regardless of what light source you will use, one thing is for sure – the more efficient the reflective material the better. One of the most reflective materials on the planet is BoPET foil, more commonly known as Mylar. BoPET is nothing but a thin film made of polyethylene terephthalate, usually covered with a very thin layer of aluminium. This material exhibits such unique physicochemical properties that it has found application in dozens of industries, including aerospace.

BoPET foil has a remarkable tensile strength, resistance to extreme temperatures and chemicals, it's also an excellent insulator. From our perspective, the most interesting feature of this material is its exceptionally high degree of reflectivity, exceeding 98%. Moreover, BoPET film diffuses the light rays evenly, thereby preventing so called hot spots.

# Highest level of reflectivity

We've decided to see for ourselves how effective is the BoPET film used to produce Paladin growboxes. For this very purpose we performed a series of meticulous tests, the results of which we present on the right.



The diagram shows the measured illuminance inside a Paladin growtent in lux (top view)

The measurements have been taken in controlled conditions inside a closed Paladin 120 growtent measuring 120 x 120 x 200 cm. The growbox has been equipped with a 600W Lumvee HPS+ lamp with a reflector, powered by Lumvee Electronic Power Supply ballast with a Super Lumen function turned on. The illuminance has been measured in 9 different test points on a square plan.

# Products



**Paladin 80**



**Paladin 80T**



**Paladin 120**

Dimensions

80 x 80 x 160 cm

80 x 80 x 200 cm

120 x 120 x 200 cm

Crop surface area

0,64 m<sup>2</sup>

0,64 m<sup>2</sup>

1,44 m<sup>2</sup>

Recommended lighting

250 W HPS, MH lub LED

250 W HPS, MH lub LED

600 W HPS, MH lub LED

**p. 16**

**p. 18**

**p. 20**



## Paladin 150

150 x 150 x 200 cm

2,25 m<sup>2</sup>

1000 W HPS, MH lub LED

**p. 22**



## Paladin 240S

240 x 120 x 200 cm

2,88 m<sup>2</sup>

2 x 600 W HPS, MH lub LED

**p. 24**



## Paladin 240

240 x 240 x 200 cm

5,76 m<sup>2</sup>

4 x 600 W HPS, MH lub LED

**p. 26**



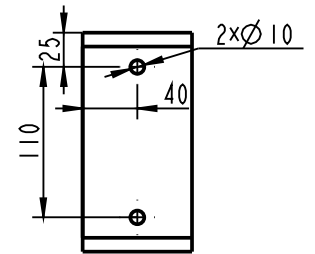
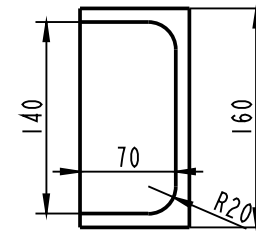
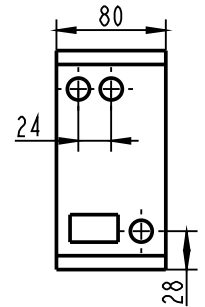
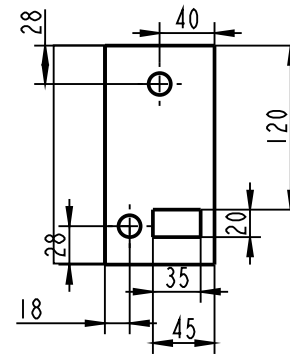
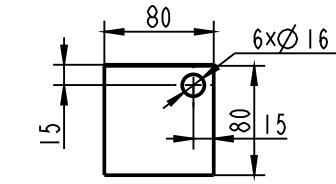
## Paladin 300

300 x 300 x 200 cm

9 m<sup>2</sup>

4 x 1000 W HPS, MH lub LED

**p. 28**



# Paladin 80

Compact but capable



**Dimensions: 80 x 80 x 160 cm (2,6'x2,6'x5,2')**

**Crop surface area: 0,64 m<sup>2</sup> (6,76 sq ft)**

**Recommended lighting: 250W HPS, MH or LED**

Novice growers frequently complain about the lack of ample space to start growing in a genuine growbox. Nothing could be further from the truth! Especially for this occasion we've designed our most compact product, Paladin 80. This growbox takes up a little more than 0.5 m<sup>2</sup> (6 sq ft) and at the same time has all the inherent features of its larger brothers. You can easily install a 250W high-pressure sodium lamp 250W, a proper blower and then just watch the speedy growth of you plants.

If you're a fan of technological innovations, it is definitely a great choice to combine Paladin 80 with LED lighting. Widely available 300W panels will provide excellent light spectrum at an optimal level of brightness. At the same time they do not generate excessive heat, which eliminates the problem of its dissipation and allows the use of a quieter fan. This small and unobtrusive solution gives you the opportunity to enjoy your own crops all year round!

- Designed with an exceptional attention to detail
- Durable materials and excellent craftsmanship
- Latest generation of BoPET film (98% reflectivity)
- An extra air inlet secured with a fine mesh, sealable with a Velcro flap.
- Easy to use zippers
- 100% lightproof
- Framework made entirely from powder coated galvanized steel pipes (16mm diameter)
- Maximum load capacity: 50kg (110lbs)

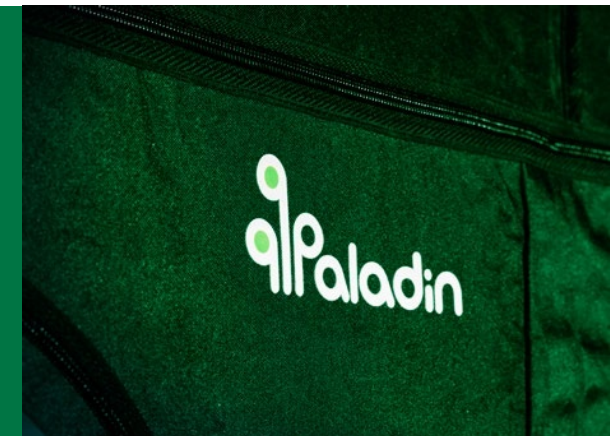


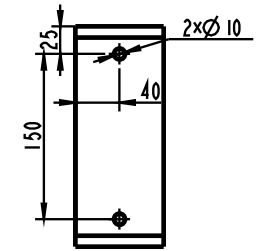
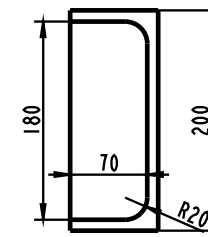
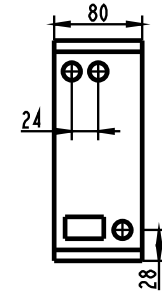
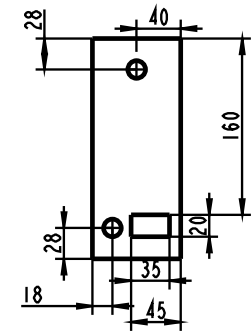
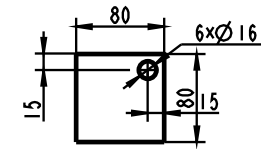
#### Ventilation:

- 6 x ø16 cm
- 2 x ø10 cm

#### The set includes:

- removable water resistant floor coated with BoPET foil
- 4 adjust straps for securing fans and ducts
- assembly manual in English
- Paladin carry bag





# Paladin 80T

The art of compromise

**Dimensions: 80 x 80 x 200 cm (2,6'x2,6'x5,2')**

**Crop surface area: 0,64 m<sup>2</sup> (6,76 sq ft)**

**Recommended lighting: 250W HPS, MH or LED**

Paladin 80T is a slight adaptation of its predecessor that also requires only 0,64 m<sup>2</sup> (6,76 sq ft). However, this version offers 2m (6,5') of space vertically. It is intended for more advanced users who plan on using a hydroponic system or growing taller plant varieties. With the additional space it's even feasible to use 400W HPS lamps without having to worry about any excessive rise in temperature. A wide range of possibilities combined with compact dimensions - that's what Paladin 80T is all about.

- Designed with an exceptional attention to detail
- Durable materials and excellent craftsmanship
- Latest generation of BoPET film (98% reflectivity)
- An extra air inlet secured with a fine mesh, sealable with a Velcro flap.
- Easy to use zippers
- 100% lightproof
- Framework made entirely from powder coated galvanized steel pipes (16mm diameter)
- Maximum load capacity: 50kg (110lbs)



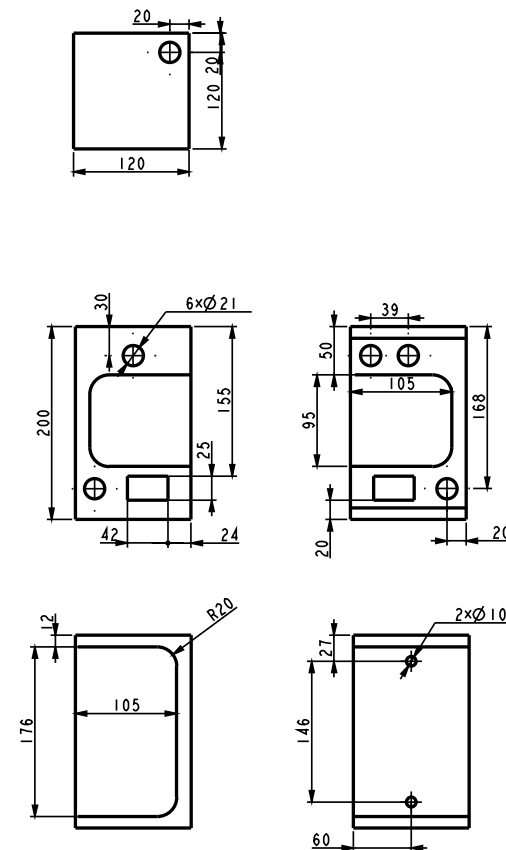
#### Ventilation:

- 6 x ø16 cm
- 2 x ø10 cm

#### The set includes:

- removable water resistant floor coated with BoPET foil
- 4 adjustable straps for securing fans and ducts
- assembly manual in English
- Paladin carry bag

A close-up photograph of the green fabric of the grow tent. The fabric has a textured, slightly wrinkled appearance. The brand name 'Paladin' is printed in a white, stylized font. The letter 'i' in 'Paladin' is replaced by a green circular icon with a white dot in the center, resembling a plant or a light fixture. The background is a solid green color.



# Paladin 120

Ideal proportions

**Dimensions: 120 x 120 x 200 cm (4'x4'x6,5')**

**Crop surface area: 1,44 m<sup>2</sup> (16 sq ft)**

**Recommended lighting: 600W HPS, MH or LED**

Introducing the Paladin 120 growbox. This particular model is the most popular among growers, mainly due to its universal character. The amount of space inside it enables the use of complex lighting and ventilation systems. Advanced hydroponic grow techniques are a viable option as well. At the same time this model does not take up much space and is a great choice for first time growers.

Paladin 120 is a perfect fit for a 600W HPS or MH light, filling the entire interior with a sufficient amount of light. It's ideal for both vegetative stage and flowering. By most cultivators it's used during the entire life cycle of plants with great results.

- Designed with an exceptional attention to detail
- Durable materials and excellent craftsmanship
- Latest generation of BoPET film (98% reflectivity)
- An extra air inlet secured with a fine mesh, sealable with a Velcro flap.
- Easy to use zippers
- Additional side doors
- 100% lightproof
- Framework made entirely from powder coated galvanized steel pipes (16mm diameter)
- Maximum load capacity: 50kg (110lbs)



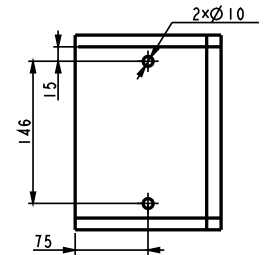
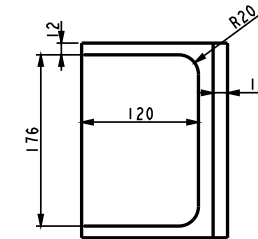
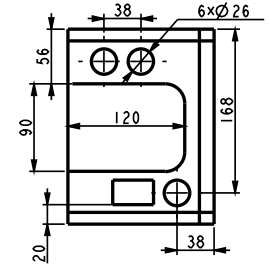
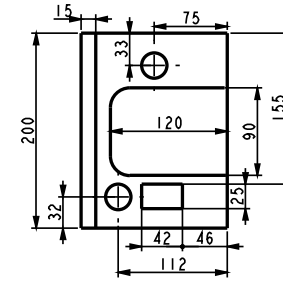
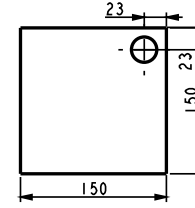
#### Ventilation:

- 6 x ø21 cm
- 2 x ø10 cm

#### The set includes:

- removable water resistant floor coated with BoPET foil
- 4 adjustable straps for securing fans and ducts
- assembly manual in English
- Paladin carry bag





# Paladin 150

Impressively spacious

**Dimensions: 150 x 150 x 200 cm (4'x4'x6,5')**

**Crop surface area: 2,25 m<sup>2</sup> (25 sq ft)**

**Recommended lighting: 1000W HPS, MH or LED**

Paladin 150 is a larger growbox based on a square layout, with all the functional features of its predecessor. By using 30cm (1') wider side walls we've made the available crop area 50% larger. This gives you even more room to play with, both for beginners and advanced growers.

Although this model has a substantial crop area, it does not have a centrally located vertical pole, which allows the use of a single light source. In this case the perfect match is a 1000W HPS lamp, preferably in a duet with large air cooled reflector. With Paladin 150 you can create an extremely easy to use grow system that will guarantee massive yields.

- Designed with an exceptional attention to detail
- Durable materials and excellent craftsmanship
- Latest generation of BoPET film (98% reflectivity)
- An extra air inlet secured with a fine mesh, sealable with a Velcro flap.
- Easy to use zippers
- Additional side doors
- 100% lightproof
- Framework made entirely from powder coated galvanized steel pipes (16mm diameter)
- Maximum load capacity: 50kg (110lbs)



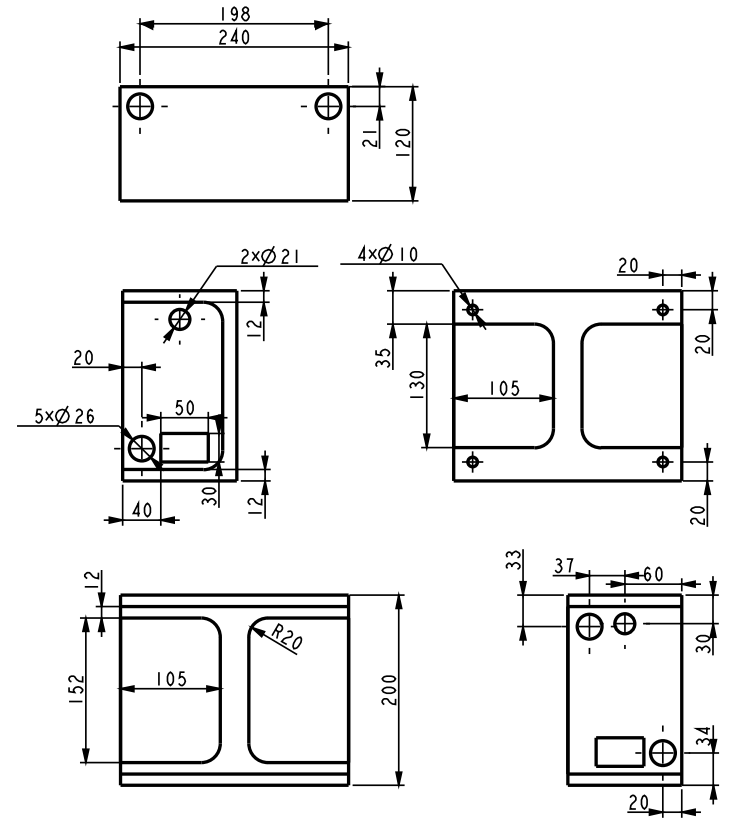
#### Ventilation:

- 6 x ø26 cm
- 2 x ø10 cm

#### The set includes:

- removable water resistant floor coated with BoPET foil
- 4 adjustable straps for securing fans and ducts
- assembly manual in English
- Paladin carry bag





# Paladin 240S

Even higher yields



**Dimensions: 240 x 120 x 200 cm (8'x4'x6,5')**

**Crop surface area: 2,88 m<sup>2</sup> (32 sq ft)**

**Recommended lighting: 2 x 600W HPS, MH or LED**

Many growers aim for the biggest yields, but do not have a room wide enough to adapt a growbox with sufficient surface area. In these circumstances, we can recommend the Paladin 240S variant. At just 120cm (4') wide it offers an impressive surface area of 2,88 m<sup>2</sup> (32 sq ft). Numerous air inlets scattered all over the tent walls give you unlimited options to arrange the airflow. The framework with a load capacity of 100kg opens up the possibility of using even the most sophisticated ventilation and lighting systems.

Unusual shape of the Paladin 240S growtent encourages experiments with many different light sources. You can install a 1000W HPS bulbs in the center, also in vertical position. Then we recommend auxiliary light sources on both sides, eg. in the form of LED panels. Alternatively, many growers use a combination of 600W HPS and MH lamps to obtain the widest possible spectrum of light.

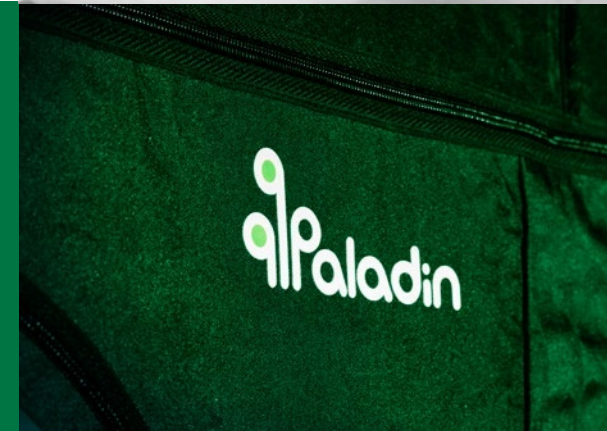
- Designed with an exceptional attention to detail
- Durable materials and excellent craftsmanship
- Latest generation of BoPET film (98% reflectivity)
- An extra air inlet secured with a fine mesh, sealable with a Velcro flap.
- Easy to use zippers
- Additional side doors
- 100% lightproof
- Framework made entirely from powder coated galvanized steel pipes (19mm diameter)
- Maximum load capacity: 100kg (220lbs)

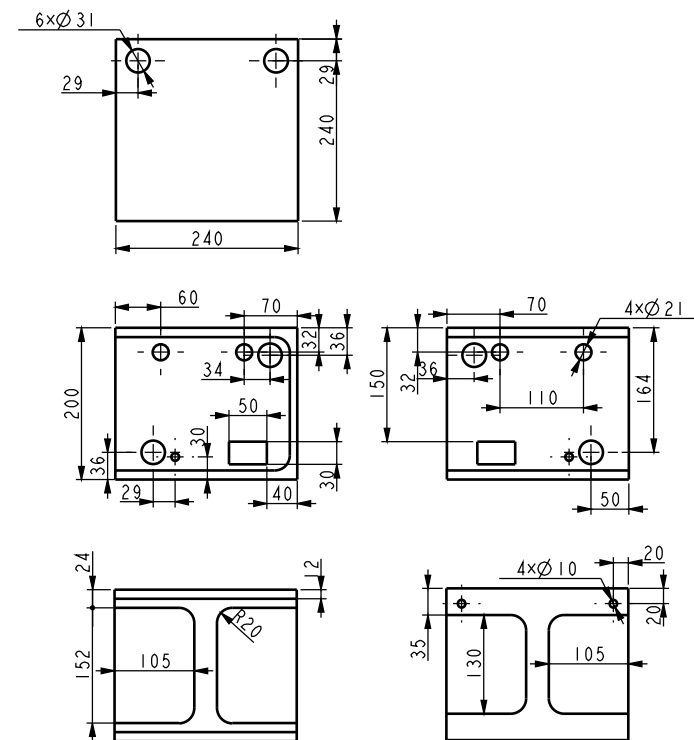
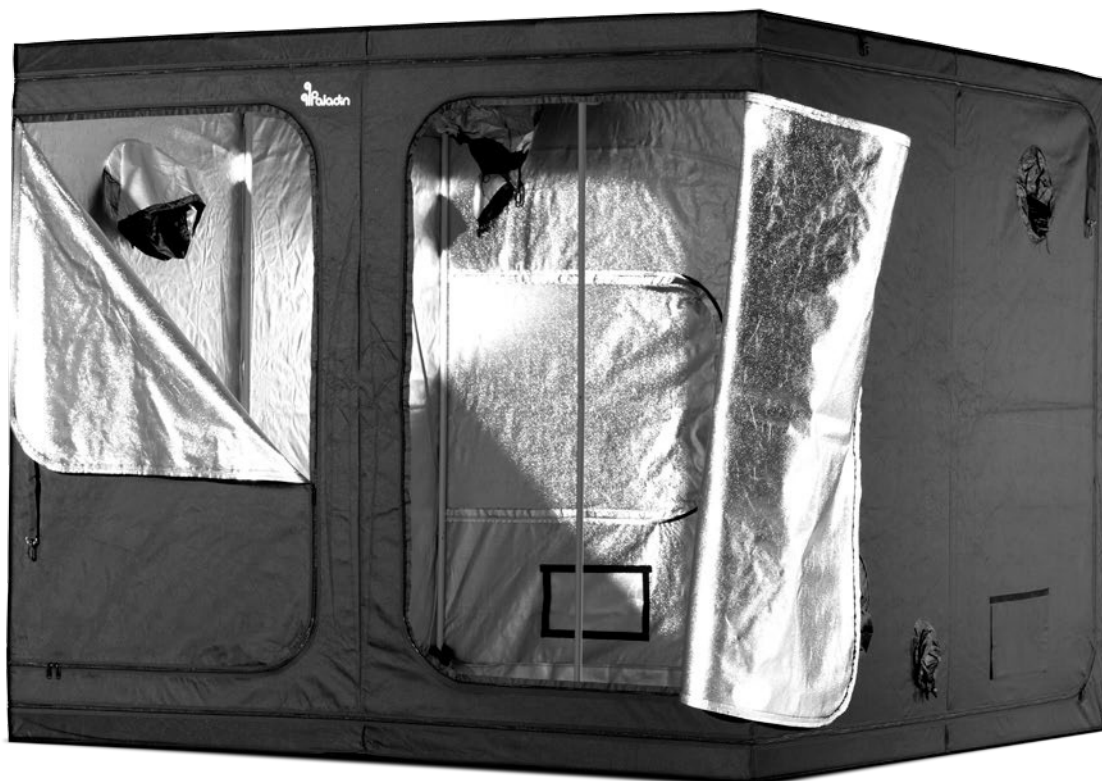
#### Ventilation:

- 5 x ø26 cm
- 2 x ø21 cm
- 4 x ø10 cm

#### The set includes:

- removable water resistant floor coated with BoPET foil
- 4 adjustable straps for securing fans and ducts
- assembly manual in English
- Paladin carry bag





# Paladin 240

Experienced grower's lab

**Dimensions: 240 x 240 x 200 cm (8'x8'x6,5')**

**Crop surface area: 5,76 m<sup>2</sup> (64 sq ft)**

**Recommended lighting: 4 x 600W HPS, MH or LED**

Paladin 240 is growbox having 5,76 m<sup>2</sup> (64 sq ft) available crop area. It is not difficult to imagine the vast array of interior design possibilities that a tent of this size offers. As a rule, we recommend the use of 4 600W HPS lamps, while nothing precludes the use of 1000W bulbs and squeezing the maximum yield from every inch of the area. Given so much space, many experienced growers are experimenting with combinations of various types and wattages of lamps, testing different layouts and angles. Top it off with an advanced ventilation system based on high efficiency fans equipped with silencers, carbon filters, carbon dioxide generators – Paladin 240 can really become a legitimate lab for every experienced cultivator.

- Designed with an exceptional attention to detail
- Durable materials and excellent craftsmanship
- Latest generation of BoPET film (98% reflectivity)
- An extra air inlet secured with a fine mesh, sealable with a Velcro flap.
- Easy to use zippers
- Additional side doors
- 100% lightproof
- Framework made entirely from powder coated galvanized steel pipes (22mm diameter)
- Maximum load capacity: 150kg (330lbs)

#### Ventilation:

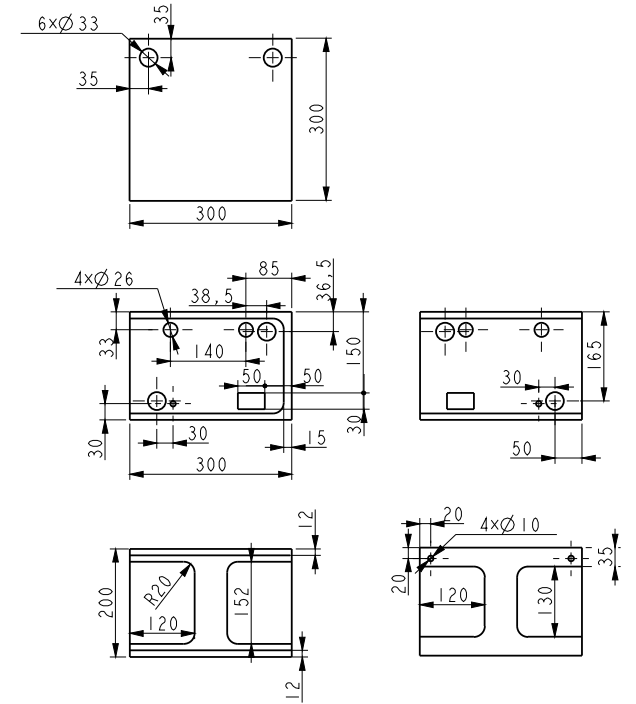
- 6 x ø31 cm
- 4 x ø21 cm
- 4 x ø10 cm

#### The set includes:

- removable water resistant floor coated with BoPET foil
- 4 adjustable straps for securing fans and ducts
- assembly manual in English
- Paladin carry bag



 **Paladin**



# Paladin 300

Highly specialized equipment

**Dimensions: 300 x 300 x 200 cm (10'x10'x6,5')**

**Crop surface area: 9 m<sup>2</sup> (100 sq ft)**

**Recommended lighting: 4 x 1000W HPS, MH or LED**

9 m<sup>2</sup> (100 sq ft) speaks for itself. Paladin 300 is the largest growbox available in our offer. It's a piece of professional equipment that meets the demands of even the most ambitious crops. Whether it's 4 1000W lamps or 8 600W lamps, one thing is for sure - this growbox has a potential for truly shocking results. Absolutely uncompromising solution targeted at growers who know what they want.

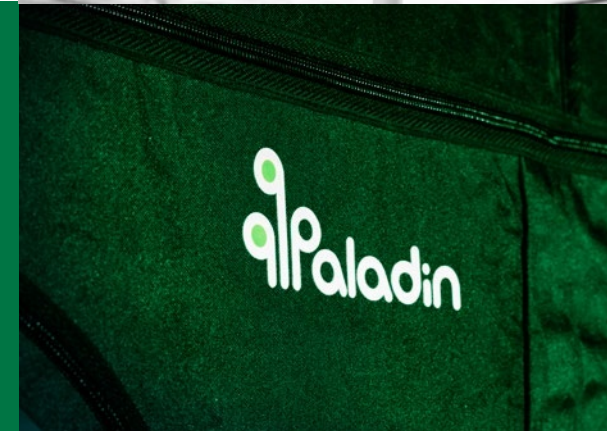
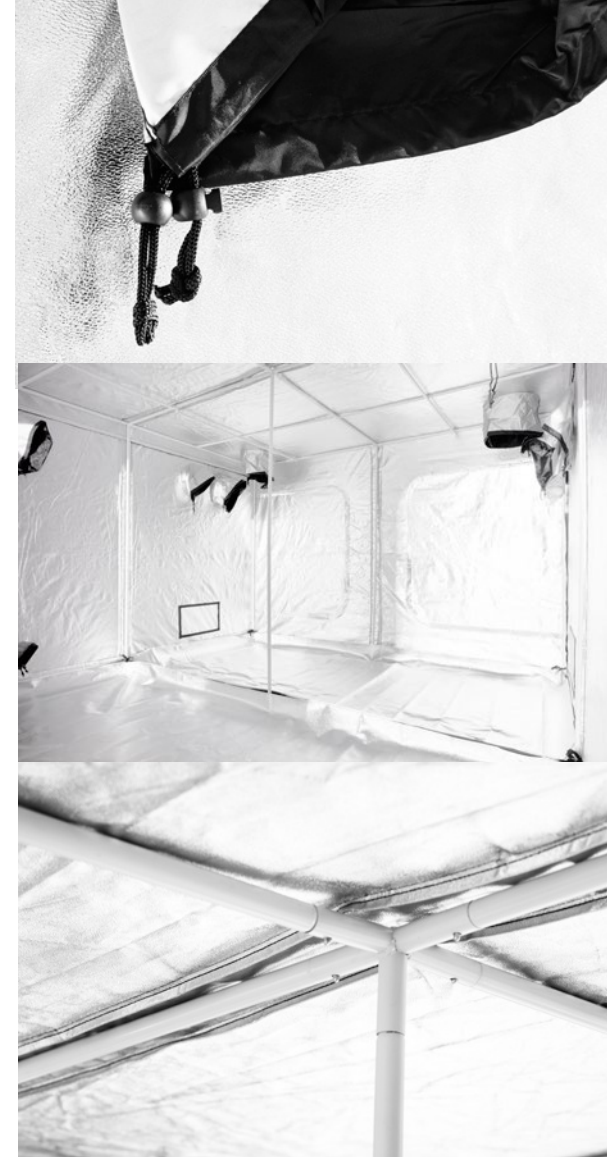
- Designed with an exceptional attention to detail
- Durable materials and excellent craftsmanship
- Latest generation of BoPET film (98% reflectivity)
- An extra air inlet secured with a fine mesh, sealable with a Velcro flap.
- Easy to use zippers
- Additional side doors
- 100% lightproof
- Framework made entirely from powder coated galvanized steel pipes (22mm diameter)
- Maximum load capacity: 200kg (440lbs)

#### Ventilation:

- 6 x ø33 cm
- 4 x ø26 cm
- 4 x ø10 cm

#### The set includes:

- removable water resistant floor coated with BoPET foil
- 4 adjustable straps for securing fans and ducts
- assembly manual in English
- Paladin carry bag



Paladin